

INDOOR LIGHTING FITTINGS: LED & CONVENTIONAL

ENVIRONMENTAL & ENERGY SAVING LIGHTING

DOWNLIGHTS:

- Recessed Mounted Downlights
- Surfaced Mounted Downlights

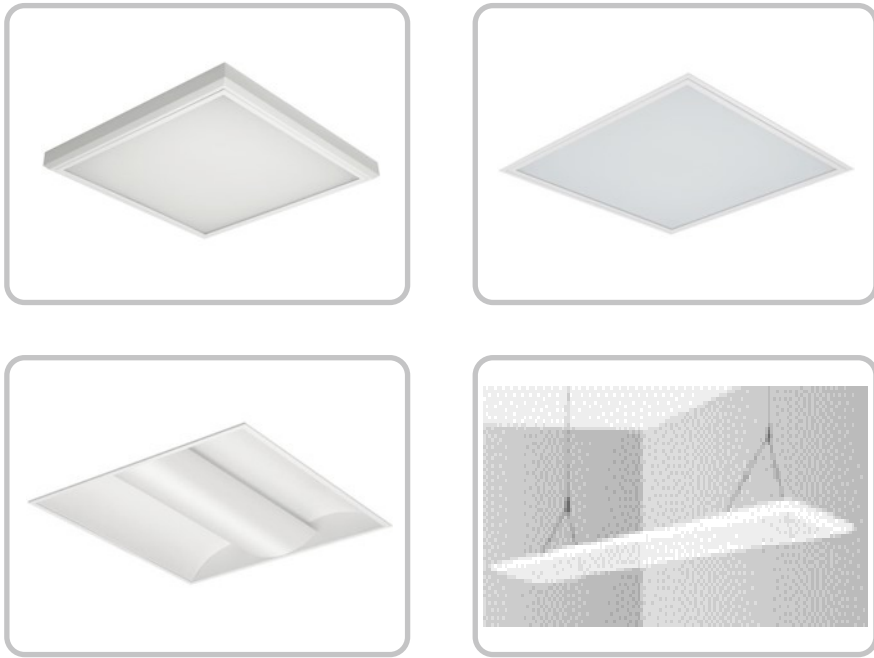


INDOOR LIGHTING FITTINGS: LED & CONVENTIONAL

ENVIRONMENTAL & ENERGY SAVING LIGHTING

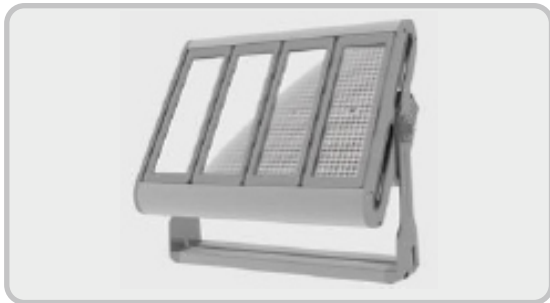
PANELS:

- Recessed Mounted Panels
- Surfaced Mounted Panels



INDUSTRIAL LIGHTING

ENERGY EFFICIENT LIGHTING SOLUTIONS



OUTDOOR LIGHTING FITTINGS LED & CONVENTIONAL

ENVIRONMENTAL & ENERGY SAVING LIGHTING

- Street lighting
- Flood lighting
- Amenity lighting
- Security lighting



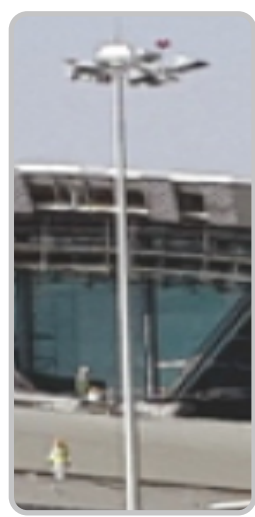
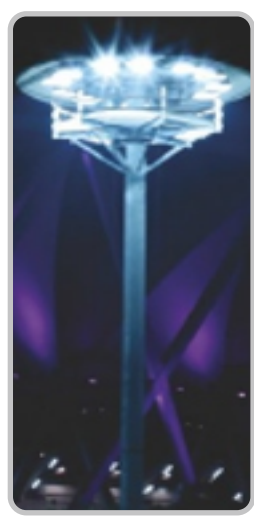
SPORTS ARENA LIGHTING

LIGHTING FOR SPORTS FIELD



STREET LIGHTING POLES & HIGH MAST

- Single / Double Arm Streetlight Poles
- Decorative Poles
- Fixed Highmast
- Mid- Hinged Highmast
- Raising / Lowering Highmast
- Stadium mast
- Apron lighting mast
- Flag mast



EMERGENCY LIGHTING

MAINTAINED

NON-MAINTAINED

CENTRAL BATTERY



SOLAR LIGHTING

SOLAR LIGHTING PRODUCTS



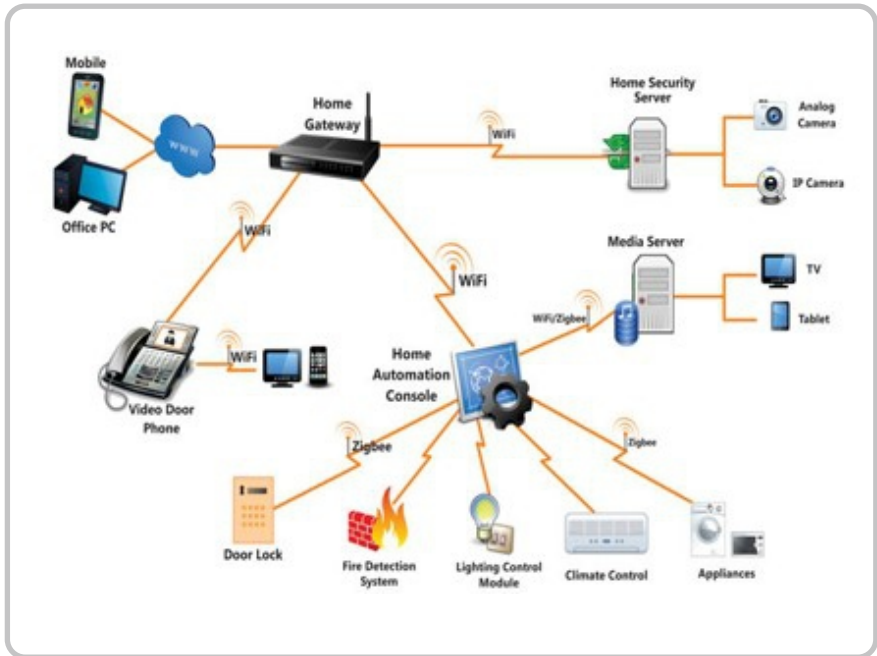
SPECIALIZED LIGHTING

HIGH ABUSE

- Vandal proof, flame proof , explosion proof and weather proof



LIGHTING CONTROLS AND AUTOMATION

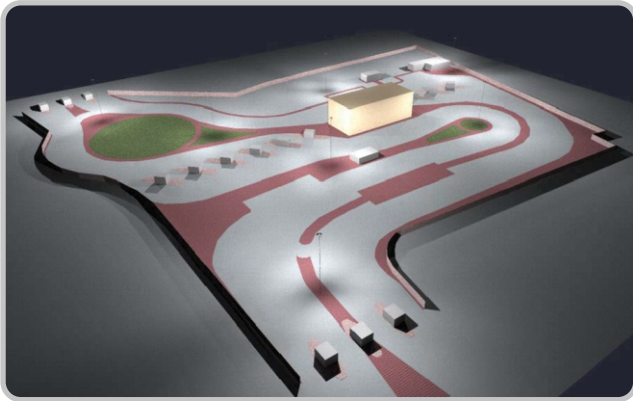


EXPLOSION PROOF/HAZARDOUS LIGHTING



ILLUMINATION DESIGNS RENDERED

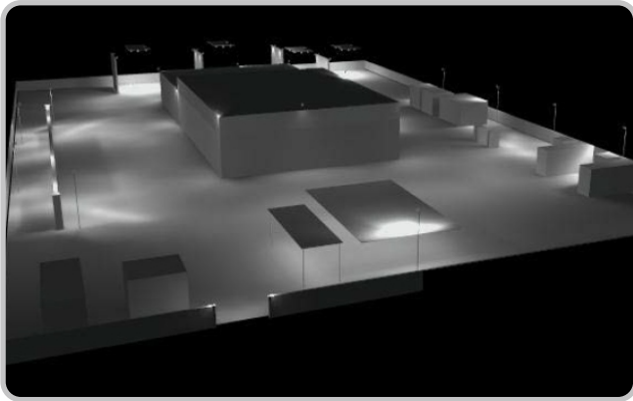
SARAH BORDER POST - ROP



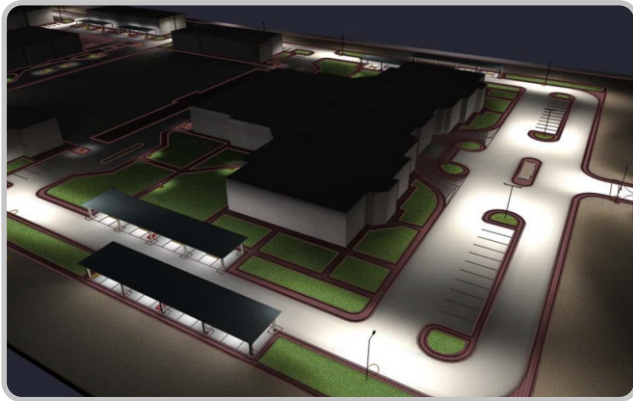
FOOTBALL PITCH AT SAHAM



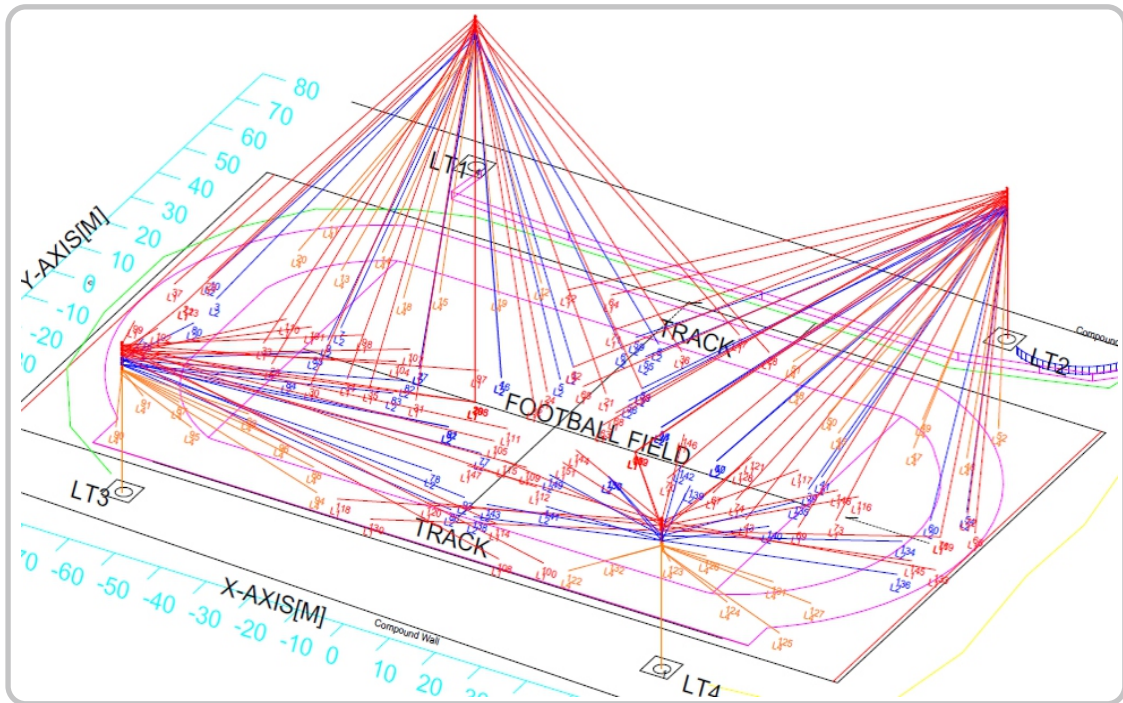
KHASAB POWER STATION



POLICE STATION COMPLEX - ROP



FOOTBALL PITCH WITH ATHLETIC TRACK FOR MOD



BRANDS REPRESENTED

